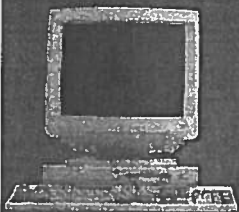
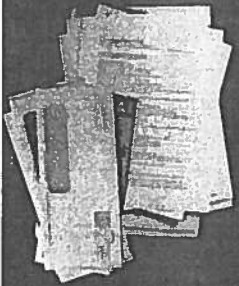
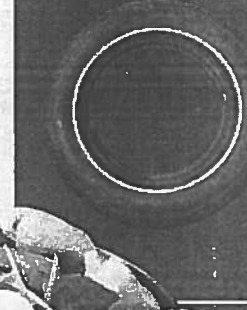


2016-2018



# The Chuck-it Guide



**The Reduce • Reuse • Recycle • Compost  
and Trash Disposal Guide for Chittenden County**



**CSWD** | CHITTENDEN **872-8111**  
Solid Waste District **CSWD.NET**

*Wise resource management for a greener Vermont.*

**SAVE FOR FUTURE REFERENCE!**

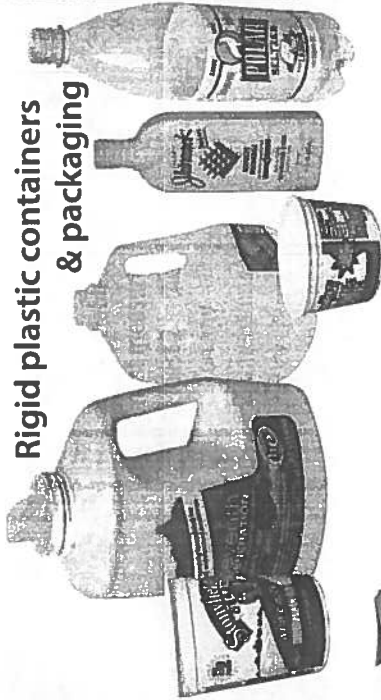
**It's a fact:** It takes more energy to manufacture products using raw materials and natural resources than it does to make them from recycled materials. You make a real difference when you recycle!

**You can recycle all of these in your blue bin or cart:**

Remember the Rule of 2:

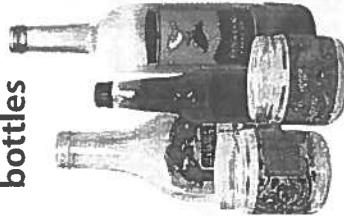
All recyclables must measure at least 2 inches on any 2 dimensions — *and* — less than 2 feet on any side.

**Rigid plastic containers & packaging**

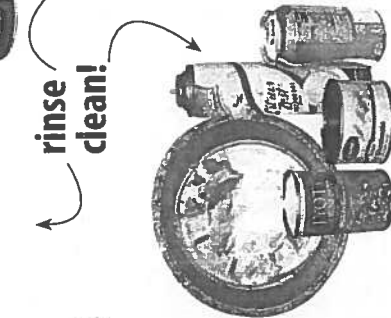


**rinse clean!**

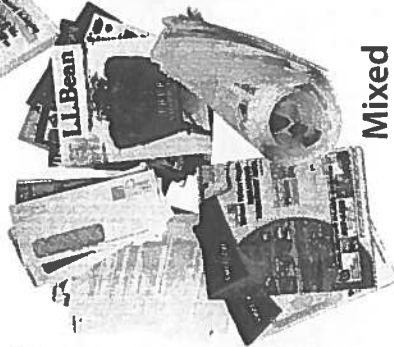
**Glass jars & bottles**



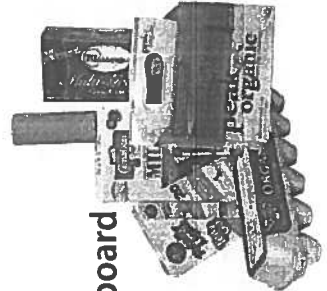
**Foil, steel & aluminum cans**



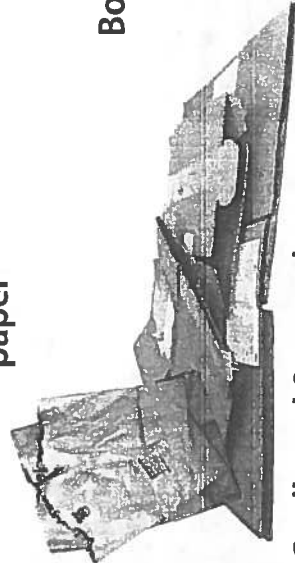
**Mixed paper**



**Boxboard**



**Cardboard & paper bags**



See pages 18-19 for a full list

**Chuck It Guide Highlights**

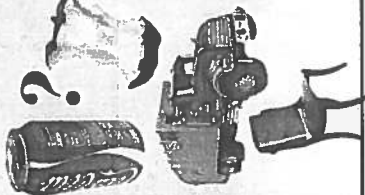
**Recycling bins & food-scrap pails**

- Recycling containers ..... 7
- Food-scrap containers ..... 8
- For businesses and schools ..... 16
- Borrow free containers for your event ..... 17



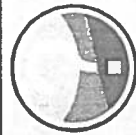
**Where & how do I chuck this?**

- CSWD facility overview ..... 3-4
- Construction & demolition debris ..... 5
- Trash & recycling ..... 6-7
- Food scraps & composting ..... 8-9
- Waste reduction tips ..... 10-11
- Hazardous waste ..... 3 & 12
- Quick A-Z list ..... 13-15
- Business, community, school & youth outreach ..... 16-17
- Mandatory recyclables & how to prepare them ..... 18-19
- Facility hours, locations, what they take ..... 24-25



**Got more questions?**

We've got answers! Visit [www.cswd.net](http://www.cswd.net) and type in what you're searching for. It's probably on our website! If not: Hotline at (802) 872-8111 • Email [info@cswd.net](mailto:info@cswd.net)



**Subscribe to the monthly CSWD email NewsFlash!**

Packed with tips, advance notice of events, regulations, and ways to keep as much as possible out of the landfill. Just e-mail [info@cswd.net](mailto:info@cswd.net) with the word "subscribe" in the subject line!



**CSWD member towns:**

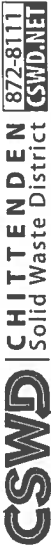
Bolton	Essex Jct.	Richmond	Westford
Burlington	Hinesburg	St. George	Williston
Charlotte	Huntington	Shelburne	Winooski
Colchester	Jericho	S. Burlington	
Essex	Milton	Underhill	

**Find CSWD online:**



[www.cswd.net](http://www.cswd.net) • E-mail: [info@cswd.net](mailto:info@cswd.net)

**CSWD facilities are closed on the following holidays:** New Year's Day • Martin Luther King Day • Presidents Day • Memorial Day (GMC open) • Independence Day • Labor Day • Columbus Day • Veterans Day • Thanksgiving Eve & Day • Christmas Eve & Day. The Materials Recovery Facility and Green Mountain Compost have varying schedules. Please visit [cswd.net](http://cswd.net) for current information.



**CHITTENDEN** (872-8111)  
Solid Waste District **CSWD.NET**  
1021 Redmond Rd., Williston, VT 05495 • (802) 872-8111 • [info@cswd.net](mailto:info@cswd.net)  
Administrative Offices open Mon-Fri 8-4:30

## Chittenden Solid Waste District

In 1987 the Vermont Legislature mandated the creation of solid waste management entities throughout the state. Functioning much like a school or water district, CSWD is a governmental organization that designs regional solutions to the solid waste challenges faced by our member towns.

CSWD's mission is to reduce and manage solid waste generated within Chittenden County in an environmentally sound, efficient, effective, and economical manner. Our vision is for our community to fully participate in minimizing disposal and maximizing reuse and recycling. It starts with manufacturers designing products to be easily reused or recycled, and ends with our everyday purchasing decisions. **CSWD by the numbers:**

- District members (that's YOU!) include everyone in Chittenden County: 163,300 residents in 65,000 households, and 6,600 businesses with 102,000 employees.
- Chittenden County disposes of about 3.1 lbs/person every day in the landfill. The statewide rate is about 3.6 lbs. The statewide goal is 2.7 lbs. We're getting closer!
- District members (that's YOU again!) currently keep about 45% of what they no longer need out of the landfill by recycling, composting, reusing, or otherwise finding ways to divert material to other uses. The statewide rate is about 35%.
- Chittenden County residents properly recycle about 69% of all of the mandatory recyclables (see list on p. 7) we generate. We're still sending 31% to the landfill, though. Every choice you make makes a difference!

### ORDINANCE ENFORCEMENT

The CSWD Solid Waste Management Ordinance requires that all businesses, institutions, and residents recycle all items on the Recyclables List (see p. 7), comply with landfill bans (see p. 6) and regulations in the Ordinance (available at cswd.net) and Vermont statute. CSWD offers free tools and assistance to help properly manage waste and recyclables. Call our Hotline at 872-8111 with questions; we're here to help!

CSWD enforces recycling and waste disposal laws by conducting random business visits and inspections of hauler loads and transfer stations. Fines of up to \$500 may be charged for each violation, with additional fines possible for each day a violation continues.

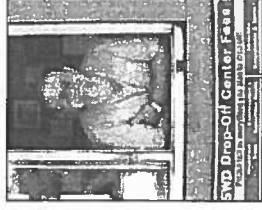
**Contact us with questions or to report a violation: Call 872-8100 ext. 242**  
**E-mail** enforcement@cswd.net • **Online** cswd.net/report-a-violation

### CSWD BOARD MEETINGS

Each CSWD member town appoints a representative and an alternate to serve on CSWD's Board of Commissioners. The Executive and Full boards meet once a month to set policy and make major decisions. The public is welcome at all meetings. Schedules, agendas, and minutes are posted at cswd.net.

## CSWD Facilities

### DROP-OFF CENTERS (DOCs)



Haul your own **trash, recyclables, compostables, and reusables** — CSWD operates seven Drop-Off Centers in Chittenden County.

- **DOCs are do-it-yourself facilities.** Please come prepared to unload your materials yourself.
- **DOCs are designed to accept small to medium loads.** Loads of any material over 1 cubic yard may be redirected to a more appropriate facility.
- **Use of dumping mechanisms is NOT ALLOWED, except at the Williston facility for clean wood, new drywall scraps, yard debris & tires.**

**Fees subject to change. Limits may apply. Call or check cswd.net for updates.**

**For fees, see p. 13-15 • Visit cswd.net for full info. • Back page for locations/hours**

Household/business trash	Construction debris	Blue bin/cart recyclables	Food scraps & compostable paper
18 gallons \$2.50	\$5.00	Up to 1 cubic yard: <b>FREE.</b> Please bring larger quantities to the MRF (see p. 4)	Small loads from households: <b>FREE.</b> Please see p. 8 for specifications.
33 gallons \$4.75	\$9.50		
45 gallons \$7.25	\$14.50		
1 cu. yard \$37.50	\$75.00		

**BURLINGTON DOC charges by weight for most items: 19¢/lb.**

### ENVIRONMENTAL DEPOT & THE ROVER



**The Environmental Depot** accepts hazardous materials and ensures that they are disposed of in an environmentally sound manner.

**What is hazardous?** Any product that is poisonous, reactive, corrosive, or flammable. Improper disposal poses a risk to human health and the environment. **See p. 12 for more info on hazardous waste.**

Businesses that generate small quantities of hazardous waste may qualify to use the Depot for a fee. Appointment required. Call for info.

**LOCATION:** 1011 Airport Parkway, South Burlington

**HOUSEHOLDS: PHONE/HOURS** • 863-0480 • Wednesday through Friday 8-2; Saturday 8-3:30  
**FEES** • No charge for up to 55 gallons for Chittenden County residents.

Fees apply to residents of other towns.

**BUSINESSES: HOURS** • By appointment

**PHONE** • 865-4663 **FEES** • Visit cswd.net

**The Rover** is a mobile household hazardous waste collection vehicle that visits each town in Chittenden County during non-winter months. **Businesses may not use the Rover.** **FREE** for Chittenden County residents. Fees apply for residents from outside the District. **Location, hours & dates vary:** Call 872-8111 or check online at cswd.net.

## GREEN MOUNTAIN COMPOST (GMC)

**Green Mountain Compost** is CSWD's commercial composting facility. GMC accepts food scraps, yard debris, and farm manures, and uses them to make compost that improves, recharges, and enriches any soil. We also use it to formulate other mixes. Available at Green Mountain Compost in bulk, bags, and in our bag-your-own bunker.

### Product offerings:

**Bulk:** Compost, Topsoil, Raised Bed Mix, Mulch, Microbe Mulch

**Bagged:** Premium Compost\*, Complete Compost, Premium Raised Bed Mix\*, Premium Potting Soil\*, Premium Seed Starter\*, Premium Topsoil\*

\*Approved for use on *organic farms & gardens*

**We deliver!** • Find out more at [www.greenmountaincompost.com](http://www.greenmountaincompost.com)

Location: 1042 Redmond Rd., Williston

Hours: Summer: Mon-Sat 8-4 • open every day in May • Mid-Nov thru Apr: Mon-Fri 8-4;

PHONE: 660-4949 •  •  @GreenMtCompost

E-MAIL: [compost@greenmountaincompost.com](mailto:compost@greenmountaincompost.com)

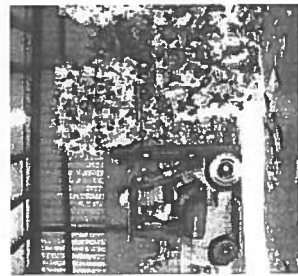
FEES: Household food scraps: Accepted **FREE**

Commercial/business food scraps: \$45/ton

Unlimited yard trimmings (leaves, non-woody debris): **FREE** (NO woody debris, soil, rocks, stumps, treated lumber. Check in at office for over 1 cubic yard of straw & hay).

*Prices & specifications subject to change.*

## MATERIALS RECOVERY FACILITY (MRF)



CSWD's Materials Recovery Facility, or MRF (rhymes with "Smurf"), is where large loads of blue-bin recyclables are sorted and prepared for market. It is owned by CSWD and operated by a contractor. Though primarily for use by licensed haulers, the MRF also accepts large loads (one cubic yard minimum) from residents and businesses.

**MRF tours** are available for groups of 6 or more.

Contact CSWD for more info: [info@cswd.net](mailto:info@cswd.net) • 802-872-8111

Visit [cswd.net](http://cswd.net)

LOCATION: 357 Avenue C, Williston

HOURS: Monday through Friday 6-3:30

PHONE: 651-5481

FEES: As of July 1, 2016, \$21/ton for all material, regardless of origin.

Fees and conditions subject to change. Prorated for loads under 1 ton.

**NOTE:** Fees are based on worldwide commodities markets and can change throughout the year. Call for latest fees and information.

## PARTNER FACILITY: McNEIL WOOD & YARD WASTE DEPOT

The McNeil Wood and Yard Waste Depot, a division of the Burlington Electric Department, burns wood to generate electricity. They accept clean wood and lumber as well as leaves, grass and other non-woody yard debris. See p. 14-15.

LOCATION: 111 Intervale Rd., Burlington • *Dumping mechanisms are allowed.*

HOURS: Mid-April through mid-Nov.: Tue., Thur., Fri. & Sat. 8-4  
Mid-Nov. through mid-April: Tue-Fri. 8-noon; Sat. 8-4

PHONE/WEB: 864-7446; [www.burlingtonelectric.com](http://www.burlingtonelectric.com)

FEES: **FREE** See p. 15 under "wood" for specifications & limits. Visit [cswd.net](http://cswd.net), or call McNeil for information.

## TRANSFER STATIONS - LOADS OVER 1 CUBIC YARD

**Williston Transfer Station**, 1496 Redmond Rd., Williston  
878-3506 • Mon.-Fri. 7-4 • Call for current fees.

**All Cycle Transfer Station**, 220 Avenue B, Williston:

864-3615 • Mon.-Fri. 7-4:15; Sat. 7-12:30 • Call for current fees.

**Myers Recycling Center** • *Construction & demolition debris only.*

Red Can Dr. (off Rathe Rd.), Colchester

655-4312 • Mon.-Fri. 7-4:15; Sat 7-12:30 • Call for current fees.

**Large loads of mandatory recyclables:**  
CSWD's Materials Recovery Facility:  
See p. 4.

## Construction & Demolition Debris

Landfill bans for certain construction & demolition (C&D) debris exist to promote sustainable use of our resources. **Please review the list of materials banned from the landfill on p. 6.** A variety of businesses and organizations accept C&D materials for reuse, recycling, and/or, as a last resort, landfilling leftovers of material not banned from the landfill. Visit [cswd.net/recycling/construction-demolition-waste](http://cswd.net/recycling/construction-demolition-waste).

**These common construction site items must be kept separate from landfill-bound waste on the job site:**

- Cardboard
- Bottles, cans, jars, jugs & tubs made of plastic, glass or metal.
- Paper

Mandatory recyclables must be empty, dry, and kept separate from all other trash and construction & demolition materials.

See p. 18-19 for a full list of mandatory recyclables.



**ACT 175**

In addition to Chittenden County landfill bans for certain C&D debris, this Vermont-wide C&D waste management law also mandates recycling for qualifying projects for drywall.

See p. 6 for a full list of materials banned from the landfill in Chittenden County. Find out if Act 175 disposal rules apply to your project at:

[cswd.net/recycling/construction-demolition-waste](http://cswd.net/recycling/construction-demolition-waste)



## Trash & Recycling

Recycling collection is included in pickup services offered by haulers in Chittenden County. **CSWD does not provide hauling services for trash or recyclables.**



**OPTION 1:** Subscribe to a private hauling service (see [next page](#)).

**OPTION 2:** Bring small loads to Drop-Off Centers (see [p. 3](#)) or Myers Recycling Center (see [back page](#)).

**OPTION 3:** Transport large loads to a transfer station (see [p. 5](#)). Burlington provides collection of residential recyclables. Call 863-9094.

Westford provides collection of residential trash and recyclables. Call 878-4587.

### BANNED FROM THE LANDFILL

**Items MUST be disposed of at a reuse, recycling, or hazardous waste facility.**

**NOTE:** Wherever you're going with any material, it's always wise to call ahead. Fees & hours subject to change without notice. Loads subject to fines if materials banned from the landfill are mixed with trash.

#### Mandatory recyclables:

- Rigid plastic food & beverage containers & packaging
- Glass jars & bottles
- Aluminum & steel cans & foil
- Cardboard & paper

#### Electronics & batteries:

- Lead-acid & rechargeable batteries
- Computers & peripherals
- Phones & answering machines
- MP3 players & stereo equipment
- TVs, VCRs, DVD/CD/MP3 players

#### Large appliances:

- Fridges, freezers, microwaves, stoves, washers, dryers, air-conditioners, dehumidifiers, etc.

#### Tires

- Grass, leaves, weeds, plants, trimmings

#### Liquid & hazardous wastes:

- Paints, stains, varnish, thinner
- Mercury-containing products
- Waste oil, filters, motor fluids
- Pesticides, herbicides
- Cleaning fluids

#### Construction materials:

- Asphalt shingles (asbestos-free)
- Plywood, OSB (unpainted/unstained)
- Lumber that has not been painted, treated, glued, etc.

#### Scrap metal:

- Anything made with 80% or more metal

#### Wood (natural):

- Logs, stumps, branches, mulch, etc.

#### Yard debris:

- Grass, leaves, weeds, plants, trimmings



**Product stewardship laws** ensure that manufacturers help provide options for proper disposal, recycling, or reuse of their products—a great incentive for them to reduce toxicity and increase recyclability of their products. Vermont's product stewardship laws cover certain electronics, paint, mercury switches & thermostats, mercury bulbs, and batteries. More info: Vermont Product Stewardship Council: [vermontpsc.org](http://vermontpsc.org).

### Recycling is mandatory in Chittenden County. For everyone.

"Blue-bin" recyclables are banned from the landfill. Residents, businesses, students, visitors — *everyone* must recycle the following items, wherever you go:

- Glass bottles & jars
- Metal cans (aluminum, steel, etc.), including empty aerosol cans
- Foil wrapping, pans
- Plastic food & beverage containers & packaging
- Office paper, newspaper, mail & magazines
- Soft-cover books
- Paper bags
- Corrugated cardboard
- Boxboard (dry food & tissue boxes, tubes from paper towels & toilet paper, egg cartons, etc.)

### RECYCLING CONTAINERS

Residents of Chittenden County may obtain up to three 16-gallon blue recycling bins per household from CSWD Drop-Off Centers and some haulers (some of whom also provide wheeled carts) and some town offices. Please leave them for the next person if you move. Call your town office to see if they provide bins.

**Businesses, institutions, and public spaces** in Chittenden County are required by law to pair a recycling container with every trash container that is accessible for public use. See [p. 16-17](#) for more info and for grants to help purchase containers.

CSWD also offers desk-side and residential-style indoor recycling bins to businesses, as well as labels for recycling and composting containers and free assistance in setting up a successful recycling program (see [p. 16-17](#)).

### TRASH, RECYCLING & FOOD SCRAP SERVICES

**NOTE: CSWD DOES NOT PROVIDE HAULING SERVICES. CALL THE COMPANIES LISTED BELOW.**

Company	Service Area	Phone
Barnier Waste	all of Chittenden County	878-3232
Burlington Public Works	Burlington (residential recycling only)	863-9094
Casella Waste Systems	all of Chittenden County	800-439-3615
Clean Green Sanitation	all of Chittenden County	658-8600
Duffy's Waste & Recycling	Milton	849-2309
Gauthier Trucking Co.	all of Chittenden County	879-4020
Jerome Trucking	Essex, Essex Jct., Milton & Underhill	849-6933
Myers Container	all of Chittenden County	655-4312
Tourville Trucking	Essex, Essex Jct., Jericho, Richmond, Underhill & Williston	899-2009
Trashaway & Recycling	Charlotte & Shelburne	985-0181

See the most current listing at [CSWD.net](http://CSWD.net)

# Food scraps & soiled paper

Vermont's Universal Recycling Law (Act 148), phases in mandated separation of food scraps for businesses. In 2020, food scraps will be banned from the landfill for everyone. The state law encourages us all to prioritize disposal of leftovers and scraps:

- 1 **Source reduction:** Smarter shopping → less waste!
- 2 **Food for people:** Donate usable food to Vermonters in need.
- 3 **Food for animals:** Find a farmer who could feed animals with your leftovers.
- 4 **Composting:** In your own backyard or bring to farmers or composting facilities.
- 5 **Energy recovery:** Biodigesters extract energy from those scraps!

**Want help figuring out what's best for you? Contact us! We're here to help!**

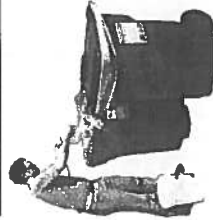
## WHAT IS COMPOSTABLE?

All items below are accepted at Green Mountain Compost and CSWD Drop-Off Centers. Some items are not recommended for backyard compost bins and piles.

FOOD SCRAPS (anything edible)	SOILED & OTHER NON-RECYCLABLE PAPER	YARD TRIMMINGS
<ul style="list-style-type: none"> <li>• table scraps</li> <li>• Great for Drop-Off Composting but NOT recommended for backyard composting:</li> <li>• meat, bones &amp; fish</li> <li>• coffee grounds</li> <li>• shellfish</li> <li>• dairy products</li> <li>• paper tea bags</li> <li>• fats &amp; cooking oils</li> </ul>	<ul style="list-style-type: none"> <li>• paper napkins &amp; towels</li> <li>• flour, potato &amp; sugar bags</li> <li>• uncoated paper plates</li> <li>• oily take-out pizza boxes (no plastic liners)</li> <li>• wet or soiled paper bags</li> <li>• uncoated butcher paper</li> <li>• newspaper</li> </ul> <p>NOTE: Tear paper into smaller pieces to speed the process in backyard systems.</p>	<ul style="list-style-type: none"> <li>• leaves</li> <li>• garden &amp; house plants, weeds</li> <li>• grass, hay, straw</li> </ul> <p>NO soil, sod branches, or woody debris</p>

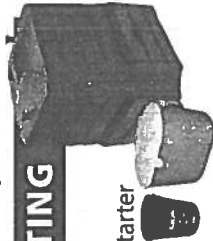
**NO** plastic **NO** glass **NO** condiment packets or cups **NO** waxed paper **NO** metal **NO** foil **NO** straws or swizzle sticks **NO** produce stickers **NO** glossy or plastic-coated paper **NO** twist-ties **NO** rubber bands. **NO** human or pet waste/litter **NO** dryer lint **NO** utensils or compostable plastic products unless they meet specifications listed at [greenmountaincompost.com](http://greenmountaincompost.com)

## DROP-OFF COMPOSTING



No time or space to compost at home? Try our **FREE** Drop-Off Composting program at Drop-Off Centers and Green Mountain Compost for moderate amounts of material.

- Locations: **CSWD Drop-Off Centers** and **Green Mountain Compost**.
- **CSWD provides a FREE food scrap collection bucket and a kitchen countertop pail to get you started!**
- **Compostable liners for sale at Green Mountain Compost.**



## CONTAINERS & BACKYARD COMPOSTING

CSWD sells backyard compost bins and digesters, and kitchen counter-top food-scrap collection pails — and offers a **FREE** starter kitchen pail! All are available at Green Mountain Compost, 1042 Redmond Rd., Williston. See p. 4.

## WHAT'S SO GREAT ABOUT COMPOSTING?

- Food scraps and food-soiled paper make up nearly one third of typical household trash. Keep that out of the landfill and you'll keep a LOT of this valuable resource from going to waste.
- Compost enhances the structure of any soil so it can balance good drainage, good water retention, and proper aeration for healthy plants. It provides microbes and nutrients that plants need to resist disease and harmful insects.
- As food scraps, compostable (and recyclable) paper, yard debris, and other organic materials break down in the airless (anaerobic) environment of a landfill, they produce methane, a harmful greenhouse gas. Plus, all the valuable nutrients and invested energy are lost forever.

## WHERE TO BUY COMPOST

**Green Mountain Compost** is CSWD's commercial composting facility in Williston with a full line of bulk and bagged soil products. See p. 4 for more info.

Many of GMC's bagged & bulk products are also available at local garden centers.

Find out more at [www.greenmountaincompost.com](http://www.greenmountaincompost.com)



1042 Redmond Rd.  
Williston, VT  
(802) 660-4949

## ACT 148 FOOD SCRAP LANDFILL BANS

Act 148, Vermont's recycling and composting law, imposes rolling landfill bans on food scraps. Many businesses have found ways to divert that material to food shelves, farm animals, or composting and energy-production facilities. Here are the upcoming landfill bans for food scraps:

- July 1, 2016 generators of over 26 tons/year (~ three 64-gallon carts/week)
- July 1, 2017 generators of over 18 tons/year (~ one to two 64-gallon carts/week)
- July 1, 2020 landfill ban for all businesses and residents

CSWD offers free help for setting up your composting program, large or small!

## FOOD-SCRAP PICKUP SERVICE

As of July 1, 2017, trash haulers are required to offer food scrap pickup service, for which they are allowed to charge a fee. Check with your trash hauler (see p. 7), property manager, landlord, and/or neighborhood association to find out your options for hiring someone to haul away your compostables. **Visit [cswd.net](http://cswd.net) for a current list** of food-scrap pickup services.



**What do you do with a take-out pizza box?** If it's clean put it in your blue bin. If the box has any grease or food on it, bring it to a DOC or to Green Mountain Compost for composting. Most frozen pizza boxes have a plastic coating and must be discarded as trash.

## Waste Reduction Tips: Reduce—Reuse—Recycle!

### REDUCE



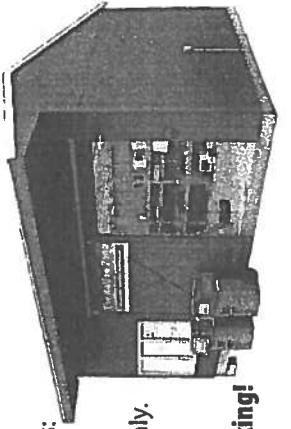
**What the heck does "reduce" mean?** "Reduce" means making choices that reduce the waste that you generate and the toxicity of products you choose. Here are some ideas:

- **Choose items with less packaging.** Minimize waste before it has a chance to be created! Buy in bulk. Step away from single-serving packaging. When you have a choice, choose the product that has been sustainably packaged. Manufacturers will get *that* message!
- **Reduce junk mail.** Get off mailing lists! Visit [cswd.net/a-to-z/](http://cswd.net/a-to-z/) junk-mail to find some great options.

- **Reduce toxicity at home & work:** Check the label and opt for safer, greener products.
- **Take the Reduce Challenge:** Use travel mugs and reusable drink containers, bring your own shopping bags, use reusable utensils and dishes at your next event. It's a great habit to get into!

### REUSE

- **Buy gently used products at resale shops.** They still have plenty of mileage left in them.
  - **Use reusable shopping bags.** Hang them on your doorknob or keep them in your car so you'll remember them when you shop.
  - **Find another user when you're done with something.** Visit our website for a list of charities and resale shops. Here are a few great online resources:
    - Craig's List ([www.craigslist.org](http://www.craigslist.org))
    - FreeCycle Network ([www.freecycle.org](http://www.freecycle.org))
    - Front Porch Forum ([www.frontporchforum.com](http://www.frontporchforum.com))
  - **Visit a ReUse Zone.** Each CSWD Drop-Off Center has a ReUse Zone for items that are too good for the landfill. **NOTE: All items must be checked in with the DOC Operator.** Fees may be charged to cover disposal costs for unwanted items, such as:
    - Kitchenware, small furniture, sporting goods, books, etc.
- Note:** Hinesburg accepts small items only.  
- Items are accepted based on condition and space availability.



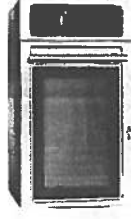
**The best part: All items are FREE for the taking!**

### RECYCLE

Mandatory recyclables (paper, bottles, cans, etc.) are accepted at Drop-Off Centers, as are many other materials, such as batteries, hardcover books, appliances, tires, metal items, clothing, electronics, etc. See p. 13-15. Myers Recycling Center also accepts small loads of recyclables (see p. 5). Fees may apply.



- **Shop for recyclability.** Choose recyclable over non-recyclable products & packaging. You're voting with your wallet and supporting manufacturers who design their products and packaging to make it easy for you to recycle them.
- **Check for recycled content when choosing what to buy.** This helps support the markets for recycled goods such as office paper and plastic lumber.
- **Recycle everywhere—it's the law.** Recycling is mandatory throughout Vermont. In Chittenden County, any trash container accessible to the public must be paired with a recycling container. Don't see one? Please ask where it's hiding—or let us know so we can help.



### LOCAL COLOR PAINT

About a third of the leftover paint brought to CSWD's Environmental Depot and the Rover (see p. 3) is sorted, blended, and filtered to make Local Color, CSWD's premium, rebled, 100% recycled latex paint. Local Color comes in many shades of interior and exterior colors (low-sheen finish), in 1-, 2-, and 5-gallon pails.

#### When you use recycled paint:

- You reduce demand for production of new paint made from virgin materials that must be transported from afar.
- You keep perfectly good paint from having to be solidified and landfilled!

**Get some Local Color paint! 1 gallon: \$11 • 2 gals: \$20 • 5 gals \$45**

**NOTE:** Prices subject to change.

#### Purchase Local Color at these locations:

CSWD's Environmental Depot, 1011 Airport Parkway, South Burlington, 863-0480  
 ReSource Building Material Center, 339 Pine Street, Burlington, 846-4015; [resourcevt.org](http://resourcevt.org)  
 ReSource Household Goods Store, 266 Pine Street, Burlington, 658-4143; [resourcevt.org](http://resourcevt.org)  
 For locations outside of Chittenden County, visit [cswd.net](http://cswd.net).



**What do you do with empty metal paint cans?** Bring them to the Environmental Depot for recycling! If you choose to throw them in the trash, residual paint must be completely dry and lid must be off. Plastic cans with dry paint are not recyclable.



## Hazardous Waste

If you don't think you have any hazardous waste at home or work, think again! Look on the labels of products in your kitchen, garage, maintenance closet, or even the bathroom. If the label includes words like **Warning! Danger! Poison!** or **Caution!**, then you have hazardous material that must be disposed of properly to avoid risk to human health and the environment.

### EXAMPLES OF HAZARDOUS PRODUCTS

**A product is hazardous if it is poisonous, reactive, corrosive, or flammable.**

**Automotive Supplies:** antifreeze, auto body filler, brake fluid, gasoline, grease, motor oil, oil filters, transmission fluid, wax

**Health/Beauty Aids:** hair dyes, nail polish/remover, thermometers, lice shampoo

**Home Improvement Supplies:** glues, paints, stains, paint thinner, roofing tar, strippers, varnish

**Household Cleaners:** ammonia, chlorine bleach, drain openers, furniture polish, oven cleaners, rug/upholstery cleaners

**Garden Supplies:** fertilizers, herbicides, pesticides, poisons

**Hobby Supplies:** photographic chemicals, pottery glaze, glues, batteries\*

**Miscellaneous Items:** ballasts, capacitors, flea powder and shampoo, fluorescent lights, thermostats, and any other mercury-containing products

\*Alkaline batteries are not hazardous. See p. 13 or visit [call2recycle.org](http://call2recycle.org) for recycling options.

Cut down on the amount of hazardous waste that you have to deal with by visiting [cswd.net](http://cswd.net) and by checking out the *Environmental Working Group's "Guide to Healthy Cleaning"* and their online "*Skin Deep Cosmetics Database*" at [ewg.org](http://ewg.org).

For info on disposal at CSWD's hazardous waste collection program, see p. 3.

### HOUSEHOLD MEDICAL WASTE

**Used needles:** Carefully put used needles ("sharps") into a thick, rigid plastic container with a screw-on cap, such as a laundry bottle (soda bottles or food-storage containers are too thin and easily punctured). Label it "SHARPS—DO NOT RECYCLE." Labels are available FREE from CSWD for Chittenden County residents. When full, secure the cap with heavy tape. Dispose of the bottle in your trash.

**Medication:** Unwanted prescription drugs should **NOT** be poured down the drain or toilet. Visit [deaddiversion.usdoj.gov](http://deaddiversion.usdoj.gov) for drug disposal options. Most can be crushed and mixed with something unpalatable such as kitty litter, coffee grounds, etc., and thrown in the trash, with the exception of the following medications:

- head lice shampoo—accepted at the Rover and at the Environmental Depot
- chemotherapy drugs—return to pharmacy or cancer clinic
- anti-neoplastic medicine—return to pharmacy or cancer clinic

**Local police stations:** Some stations offer take-back options. Give them a call!


**Businesses must follow applicable disposal laws & regulations.**


## Quick A-Z List


Find the full A-Z List at [www.cswd.net](http://www.cswd.net).

Facility codes at the bottom of the page indicate where items are accepted. Limits may apply. **Back page** for facility locations, hours & contact info.

**Fees & specifications subject to change. It's always a good idea to call ahead!**

 = Recyclable in your blue bin or cart •  = banned from trash disposal

**Aerosol cans**  **DOC** Recycle empty, non-hazardous aerosol cans in your blue bin or cart. Cans containing leftover hazardous material are accepted at **ENV**. Empty household hazardous cans (including spray paint cans) may be disposed of with household trash.


**Appliances**  **DOC** Boiler, dishwasher, dryer, furnace, microwave, stove, washer, water heater: \$5. Fridge, freezer, water cooler: \$10. Air-conditioner, dehumidifier, commercial refrigerator unit: \$15.

**Asphalt** CSWD facilities do not accept asphalt for recycling. Recycling options: visit [cswd.net](http://cswd.net). Fees apply for construction debris landfill disposal: **DOC** (Except *Hinesburg*) • **TS**.

**Asphalt shingles**  **MY** • **TS**

**Batteries** (all types) **DOC-ENV FREE** Recyclable...but **NOT** in your blue bin! Button cell, lead acid, lithium, NiCad, rechargeables:  Visit [Call2Recycle.org](http://Call2Recycle.org) for other locations.


**Bricks** CSWD facilities do not accept bricks for recycling. Recycling options: visit [cswd.net](http://cswd.net). Fees apply for construction debris landfill disposal: **DOC** (Except *Hinesburg*) • **TS**.

**Christmas trees** **DOC** (Except *Burlington & Hinesburg*) • **MW** Real trees  must be free of all human-made items: **FREE DOC** Artificial trees or those containing decorations: \$1.25/ft. in height trash fee.

**Clothing, rags & textiles** **DOC FREE** Clothing, linens, accessories, paired shoes, rags, and fabric—Must be clean and dry. (limit: 7 bags/day)

**Concrete** **DOC** (Except *Hinesburg*) • **TS** CSWD facilities do not accept concrete for recycling. Fees apply for construction debris landfill disposal. Recycling options: visit [cswd.net](http://cswd.net).

**Construction & demolition debris** Some materials recyclable and/or banned from the landfill and are listed individually here. Complete A-Z list at [cswd.net](http://cswd.net). **DOC** (Except *Hinesburg*) • **TS** • **MY** See p. 5 for more construction & demolition debris disposal info.

**Corrugated cardboard**  **DOC FREE** Please flatten. Pieces can be no larger than 4 ft. x 4 ft.; up to 1 cubic yard. Larger quantities to **MRF** (see p. 6 for fees). Some curbside haulers require 2 ft. x 2 ft. maximum size. Please call your hauler for specifications.

**Drywall/Sheetrock Recycling:** **DOC** (*Williston only*) New, clean scraps only. NO other material may be present (paint, plaster, tape, wallpaper, cement board, screws, nails, etc.).

\$18/cu. yd. up to 2 cu. yds.; large loads: \$70/ton (large loads accepted Mon-Fri 8-3:30 only). **MY** • **TS** Call for specs and fees.

Landfilling: **DOC** (except *Hinesburg*) \$75/cu.yd. Limit 1 cu. yd. Large loads: **TS** Call for fees.

**Continued** 

**DOC**=CSWD Drop-Off Centers (see p. 3 & back page) **ENV**=CSWD Environmental Depot (see p. 3)

**GMC**=CSWD's Green Mountain Compost (see p. 4) **MRF**=CSWD Materials Recovery Facility (see p. 6)

**MW**=McNeil Wood & Yard Waste Depot (see p. 5) **MY**=Myers Recycling Ctr (see p. 5)

**TS**=Transfer stations (see p. 5 under "large loads")



**Electronics** DOC-ENV (does not include lamps, fans and other household appliances) TVs, monitors, computers, printers, peripherals: **X** Up to 7 items **FREE**. Over 1 cu. yd.: Appointment required. \$0.18/lb. fee for more than 7 items may apply to certain businesses & institutions. Please call 872-8111 for instructions *before* loading your vehicle!  
**Audio/visual electronics** **X** **Partial list:** Cell phone, pager, PDA: **FREE**; handheld phone: \$1; digital converter box: \$1; speakers: \$1/foot in height; game console: \$2; VCR, CD/DVD player, boom box: \$2.50; Grocery bag of misc. cords, chargers, headphones, etc.: \$2.50; fax machine, stereo: \$5. Loads over 1 cu. yd. accepted by appointment only at Williston, \$0.18/lb. Call 872-8111. *Visit cswd.net for a complete list & vtcycles.org for statewide info.*

**Fire extinguishers** DOC (must be empty) **FREE**. ENV Empty or not.

**Fluorescent bulbs, tubes & other mercury-containing lamps for general-purpose lighting** **X** DOC-ENV unlimited CFLs & 10 or fewer tubes: **FREE**. Other specialty lighting and larger quantities accepted at ENV; Fees may apply. Call 865-4663 for fee info.

**Food scraps** For info on composting, see p. 8-9.

**Residents** DOC up to 30 gallons of household kitchen scraps per day: **FREE**

**GMC** unlimited loads of household kitchen scraps: **FREE**

**Businesses** GMC: \$45/ton

**Furniture, fixtures, and other bulky items** DOC (except *Hinesburg*) Carpet (dry): \$0.15/sq. ft.; chair: \$4-10; couch: \$17-26; mattress or box spring: \$10-20; recliner: \$10; sink: \$5-14; table: \$5-20; toilet: \$14; standard window w/casing: \$10.

**Hardcover books** DOC Up to 1 cubic yd.: **FREE**

**Hazardous leftovers** **X** ENV (solvents, cleaners, fuel, fertilizers, poisons, etc.)

**CSWD Residents** **FREE** (qualifications & limits apply). See p. 3 for info on ENV and the Rover. **Businesses** Fees apply; appointment required. Call 865-4663.

**Leaves & yard debris** **X** DOC-GMC-MW (non-woody lawn & garden debris): **FREE**

**Medical waste, medications** **X** CSWD facilities do not accept medical waste. See p. 12. Also see p. 12 for info on proper disposal for household medications & sharps.

**Mercury-containing thermometers & thermostats** **X** DOC-ENV Up to 5 per day: **FREE** Visit mercvt.org for statewide info.

**Metal items** **X** DOC Must be at least 80% metal (e.g., bicycles, metal furniture, car parts, drained lawn mowers, grills, exercise equipment, small parts, hardware): **FREE**

**Motor oil** **X** DOC-ENV Up to 15 gallons per day; no more than 2 gal. per container: **FREE** Contaminated oil and larger quantities must be taken to the ENV (See p. 3). Dispose of empty containers as trash.

**Oil filters** **X** DOC-ENV From residents only; up to 5 per day: **FREE**

Larger quantities and filters from businesses accepted only at the ENV (See p. 3)

**Paint (architectural liquid leftovers)** **X** ENV **FREE** Visit PaintCare.org for additional collection sites throughout Vermont.

DOC=CSWD Drop-Off Centers (see p. 3 & back page) ENV=CSWD Environmental Depot (see p. 3)

GMC=CSWD's Green Mountain Compost (see p. 4) MRF=CSWD Materials Recovery Facility (see p. 6)

MW=McNeil Wood & Yard Waste Depot (see p. 5) MY=Myers Recycling Ctr (see p. 5)

TS=Transfer stations (see p. 5 under "large loads")

**Plastic Bags** DOC for disposal only; trash fees apply. Many grocery stores accept them for recycling. Visit the A-Z List at cswd.net for more information.

**Propane tanks** **X** DOC-ENV Limit 5/day. Up to 20 lb.: **FREE**. Over 20 lb.: **ENV • DOC** (*Williston only*): \$5.00

**Reusable items** Visit cswd.net for an extensive list of outlets for reusable construction & demolition materials, automotive parts, books, clothing, computers, furniture, sporting goods, household goods, toys, and more. See p. 10 for info on reuse options.

**Styrofoam** is NOT recyclable in Chittenden County at this time. Landfill fees apply. Used Styrofoam packing peanuts are accepted for reuse at many mail service shops.

**Tires** **X** DOC (add \$1 per tire if on rim); fees based on rim size:

Up to 16" (e.g., car, van): \$2.75 (\$2.25 at Williston); 16.5" to 19.5": \$5.25 (\$3.75 at Williston); 20" to 24.5": \$14.00; over 24.5": \$56.00; more than 20 tires (Williston only): \$200/ton

**Trash** **DOC** See p. 3 for loads under 1 cu. yd. Larger loads accepted at **TS**

**Wood** (*Visit cswd.net for other local options.*)

• **Clean, natural wood** **X** (brush, limbs, logs, Christmas trees, clean stumps). Must be free of dirt, stones, ornaments, etc. Size max: 2 ft. dia., 6 ft. long.

**DOC** (except *Burlington & Hinesburg*) Up to 3 cubic yards: **FREE**; add 1 yards: \$10

*Williston only:* Up to 6 cubic yards **FREE**; add 1 yards: \$5.00

Dumping mechanisms allowed at Williston only.

**MW** unlimited quantities **FREE**. Dumping mechanisms allowed.

• **Clean lumber & pallets** **X** NO painted, stained, treated, or glued (plywood). NO dirt, stones, metal, plastic. Nails, screws OK up to ¼-in diameter. Size max: 8 ft. long.

**DOC** (except *Burlington & Hinesburg*): Up to 1 cu. yd.: **FREE**; add 1 cu. yds.: \$5/yd.

*Williston only:* large commercial truckloads: \$50/ton

Dumping mechanisms allowed at Williston only.

**MW** unlimited quantities **FREE**; dumping mechanisms allowed.

• **Clean plywood & oriented strand board (OSB)** **X** **MY-TS** for recycling. See p. 5.

**Dirty wood** Has been stained, painted, treated, glued: Visit cswd.net for recycling options. **TS:** Large loads accepted. Call for fees.

**Wood, pellet & coal ashes** **DOC** Must be cold, with no live coals! Household trash rates.

DOC=CSWD Drop-Off Centers (see p. 3 & back page) ENV=CSWD Environmental Depot (see p. 3)

GMC=CSWD's Green Mountain Compost (see p. 4) MRF=CSWD Materials Recovery Facility (see p. 6)

MW=McNeil Wood & Yard Waste Depot (see p. 5) MY=Myers Recycling Ctr (see p. 5)

TS=Transfer stations (see p. 5 under "large loads")



Those tiny numbers **don't** tell you whether an item is recyclable here in Chittenden County.

**Successful recycling is about much bigger numbers:** Can our facility successfully sort enough of any one kind of material? Can we sell it on the global market at a price that helps cover recycling costs? Can we pack enough onto a truck to cover the environmental and freight costs of shipping it thousands of miles away to a processor?

Follow the plastics guidelines on pages 18-19, and disregard those numbers!

## Essentials for businesses, landlords, schools, community groups & events

### CONTACTS

- **Businesses & colleges:** biz@cswd.net • 872-8100 ext. 237  
cswd.net/outreach-education/businesses
- **Community groups, residential issues:** community@cswd.net • 872-8100 ext. 234  
cswd.net/outreach-education/communities-municipalities
- **Events and festivals:** events@cswd.net • 872-8100 ext. 239  
cswd.net/event-waste-reduction
- **K-12 schools and youth programming:** schools@cswd.net • 872-8100 ext. 211  
cswd.net/outreach-education/schools-and-youth
- **Landlords and property managers:** community@cswd.net • 872-8100 ext. 234  
cswd.net/outreach-education/landlords

### LEGAL COMPLIANCE RESOURCES

- CSWD provides no-cost resources to help you comply with local and state recycling, composting, and waste management laws, including:
- Desk-side recycling bins for classrooms, offices, and break rooms.
  - Food scrap kitchen counter-top pails and collection buckets.
  - Labels for containers.
  - Instructional posters and downloadable signs for offices, facilities, sort stations, and events.

### EDUCATIONAL RESOURCES & ACTIVITIES

- Training for teachers, administration, students, and staff/employees, covering the who, what, when, where, and why of materials management.
- On-site technical assistance in setting up and maintaining successful recycling and food scrap collection programs.
- Trash On the Lawn Day — also known as waste audits — yield valuable data and reveal areas for improved recycling, reusing, wasted food prevention, and composting programs.
- Ways to make your purchasing decisions deliver the biggest, "greenest" results.
- Multiple classroom programs and activities focused on the 3Rs, composting, worm composting, and more.



### FIELD TRIPS & FACILITY TOURS

Follow the trail of resources at CSWD facilities:

- **Materials Recovery Facility,** where recycling happens.
- **Green Mountain Compost,** where food scraps and yard debris are turned into compost
- **Drop-Off Centers,** where residents and businesses bring small loads of recyclables, reusables, compostables, and trash.
- **Environmental Depot,** where hazardous waste is processed for proper disposal, and Local Color paint is made from paint brought in for recycling.



### CSWD WORKSHOPS & EVENTS

- **Educational movie nights:** Family-friendly and packed with info on resource-related topics.
- **Backyard composting workshops:** At Green Mountain Compost or on-site at your business, institution, residential complex, neighborhood group, or community garden..
- **We can customize a workshop for you:** We can create a workshop that addresses your organization, group, or event's unique needs for recycling, composting, and general waste reduction. See opposite page for contact info.

### WASTE REDUCTION RESOURCES FOR YOUR EVENT

- **Guidance & resources:** Help choosing utensils, plates, cups, and packaging and other tools for throwing a waste-free event.
- **Event container loan program:** Borrow CSWD's recycling and food-scrap collection containers and signs: **FREE.**
- **Waste Warrior program:** Trained volunteers help educate and assist attendees with proper disposal. Info: [cswd.net/reduce-and-reuse/waste-warriors](http://cswd.net/reduce-and-reuse/waste-warriors)

### BECOME A WASTE WARRIOR

- **Training:** Learn the ins and outs of recycling and composting, including best practices for reducing waste at events.
- **Staff an event:** Keep watch over sort stations at Chittenden County events. Do your part to reduce waste at events—and get some great perks!
- **Become a Waste Warrior today!**  
Visit [cswd.net/reduce-and-reuse/waste-warriors](http://cswd.net/reduce-and-reuse/waste-warriors)

### AWARDS & RECOGNITION

- **Food Waste Fighter:** Show off your food-waste-fighting cred with this cool window decal.
- **Help us celebrate you:** What are you doing to make sure valuable resources stay out of the landfill and reduce toxins in our environment? Let us know and we'll help you receive community-wide recognition.



## RECYCLE ONLY THESE ITEMS IN YOUR BLUE BIN/CART

### ITEMS

### ACCEPTABLE PRODUCTS

#### GLASS

Glass bottles & jars

Food and beverage containers only.

#### METAL

**Aerosol cans**

Non-hazardous, food-based products only are accepted in blue bins/carts. Cans must be empty.

#### ALUMINUM

Cans, foil, and pie plates.

#### METAL CANS

Food and beverage cans only.

#### PLASTIC

**Rigid plastic containers & packaging**

Minimum size: 2" on any 2 dimensions. Maximum size: 2' on any side. Bottles & jugs for foods, drinks, beauty products, detergents, etc. Dairy tubs (yogurt, sour cream, etc.), pails up to 5 gallons, take-out containers, flower pots and trays, and frozen-food trays. **No black plastic, plastic bags, or Styrofoam!**

#### BOXBOARD

Empty cereal, shoe, and clothing boxes, 6- and 12-pack soda & beer carriers, paper egg cartons, dry-food boxes (pasta, rice, etc.), tissue boxes, paper towel and toilet paper cores, etc.

#### CORRUGATED CARDBOARD

Boxes with a wavy center-layer.

#### ENVELOPES & OPENED MAIL

Flyers, correspondence, envelopes (white, manila, colored, gummed, and window), etc.

#### MAGAZINES, CATALOGS, & SOFT-COVER BOOKS

Glue- or staple-bound publications, paperback books, phone books, etc.

#### NEWSPAPER

All sections and inserts.

#### PAPER BAGS

All colors.

#### SHREDDED PAPER (in clear, plastic bags only)

Confidential documents.

#### WHITE & COLORED PAPER

Letterhead & copier paper, glossy flyers & brochures, file folders, kraft paper, manila folders, index cards, construction paper, non-metallic wrapping paper, tissue paper & cards.

### PREPARATION

**Rinse clean.** Remove lids; recycle plastic lids over 2" in diameter; discard smaller lids. Neck rings & labels OK. Recycle metal lids separately at Drop-Off Centers.

Must be completely empty. Separate caps from container. Recycle plastic caps over 2" in blue bin. Discard smaller caps. Do not puncture cans.

#### Rinse clean.

Labels OK. Lids OK placed inside cans.

**Rinse clean.** Labels OK. Do not include loose caps smaller than 2" in diameter in recycling containers. They will not be recycled. Remove handles from pails. Recycle metal handles as scrap metal at Drop-Off Centers. Do not tie with string.

**Empty and flatten.** Remove and discard plastic liners. Recycle metal pour spouts as scrap metal at Drop-Off Centers.

**Empty and flatten.** Up to one cubic yard of up to 4-ft. sections accepted at Drop-Off Centers. Staples, tape, and labels OK. Pizza boxes must be clean.

Remove & discard nonpaper enclosures (plastic cards, etc.) and strings. Labels OK.

**Must be clean and dry.**

**Must be clean and dry.** Remove from plastic bags. Do not tie with string.

**Remove twine and plastic handles.**

Place in clear plastic bags and tie shut.

**Must be clean and dry.** Remove plastic tabs, paper clips & metal hanging-file strips. Staples are OK.

### BLUE BIN NO-NOS

No light bulbs, dishes, Pyrex, drinking glasses, window panes, or ceramics, or broken glass.

Deliver paint, cleansers, auto sprays, and other hazardous products to the Environmental Depot.

No aluminum with stuck-on food or grease.

No oil filters, hazardous material containers, bottle caps, or scrap metal.

No filmy, pliable plastic (grocery bags, bubble wrap, etc.); Styrofoam (take-out containers, cups, packaging blocks, peanuts, etc.); laundry baskets, sleds, housewares, office products, etc.; pesticide or automotive-fluid containers, or electronics housing; black plastic, or biodegradable plastics (PLA).

No detergent boxes, frozen- or refrigerated-food boxes, drink boxes, or milk or juice cartons. No paper plates or cups.

No oil-, paint-, or chemical-stained, wet, unclean, or wax-coated cardboard. No strapping or string. No plastic, filmy, or foam packing materials.

No Tyvek or plastic envelopes. No padded mailers (bubble wrap, paper filling, etc.).

No plastic wrapping, CDs, spiral or 3-ring notebooks, or plastic covers.

None that are soaking wet or contaminated with food, paint, oil, pet waste, etc. No plastic bags.

No plastic-coated or -lined bags. No animal-food, wood-pellet, or kitty-litter bags.

No shredded plastic, heat- or pressure-sensitive (NCR) paper.

No pressure-sensitive duplication forms (NCR). No foil paper. No paper towels, facial tissue, or paper plates or cups. No stickers or sticker backing material.

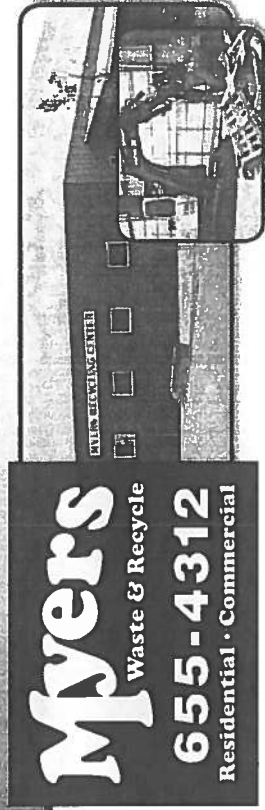
# Myers Recycling Center NOW OPEN!

Vermont's First Construction and Demolition Waste Recycle Center

Now Accepting Wood, Concrete, Metal, Shingles, Sheetrock, and All Construction Waste

Also Accepting Yard Waste and Bag Trash

Call **802-655-4312** for More Information  
**216 Red Can Drive** (off Rathe Road),  
**Colchester, VT**

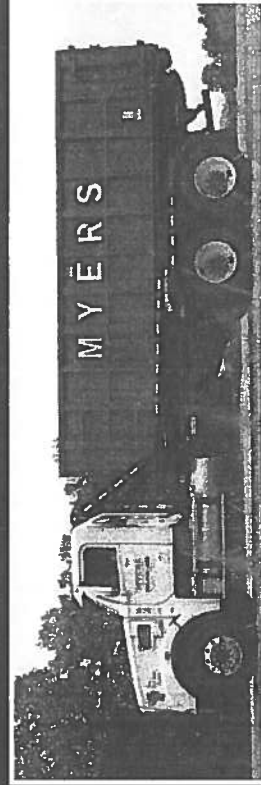


**Myers**  
Waste & Recycle  
**655-4312**  
Residential • Commercial

**The Red Can**  
**DUMPSTER RENTAL**  
*For Homeowners and Do-It-Yourselfers*

Prices Starting at JUST **\$295!**

*Our home-friendly dumpsters are perfect for clean-ups, junk removal, remodeling, appliance removal and more!*



CALL US AT **802-497-0612** OR VISIT US AT [WWW.THEREDCANFAMILY.COM](http://WWW.THEREDCANFAMILY.COM) TO ORDER TODAY.

# CASELLA OFFERS COMPLETE WASTE & RECYCLING SOLUTIONS

FOR YOUR HOME, BUSINESS, SCHOOL, OR TOWN

- Zero-Sort® Recycling
- Containers 2-40 Yards
- Convenient Curbside Pickup
- Trash & Recycling Compactors
- Easy Dumpster Rentals
- Online Bill Pay
- Dependable Local Service
- Free Business Waste Analysis



**CURBSIDE TRASH & RECYCLING**



**COMMERCIAL TRASH & RECYCLING**



**EASY & CONVENIENT DUMPSTER RENTALS**

**800-CASELLA**



**RESOURCE SOLUTIONS**

ZERO-SORT • RECYCLING • COLLECTION • ORGANICS • ENERGY • LANDFILLS

*Proudly Serving Local Communities Since 1975*

[casella.com](http://casella.com)

# All-In-One Recycling!

- **All-In-One Carts!** We now offer wheeled recycle carts in your neighborhood!
- **Variable Rate Structure:** weekly, biweekly or monthly, cart sizes: 35g, 65g and 95g.
- **Special and Custom Pick-ups**
- **Tires, Roll Offs and Dumpsters**

Pay less this year and

**Green Up your neighborhood!**

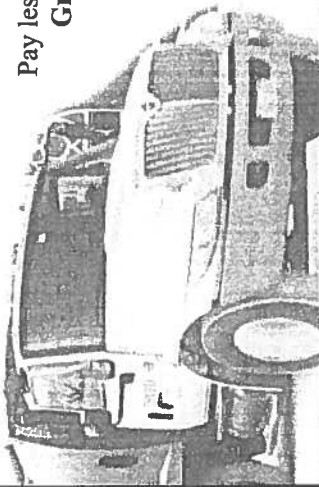
*Call to sign up today!*

## CLEAN GREEN



sanitation

Like us on Facebook!



802-658-8600 • [www.cleangreenvt.com](http://www.cleangreenvt.com)

- Do you have a used or empty oil tank in your basement?
- Have you converted to natural gas recently?
- Selling your house or refinishing your basement?

**YES? –It's time to call a Tankout specialist!**

Residential Oil Tank Removal



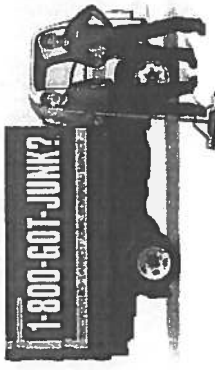
[www.tankoutvt.com](http://www.tankoutvt.com)

See how easy a **Tankout** tank removal can be!  
We recycle 100% of sludge oil & metal tank.

Residential Oil Tank Removal & Replacement

**802-735-7880**

## Goodbye Junk. Hello Relief.



**Book today and save \$25\* or \$50\*\***  
\*on up to half a load \*\*on over half a load.

By choosing us you help save billions of pounds of junk from the landfill.

**Locally owned and operated**  
1-800-468-5865 | [1800gotjunk.com](http://1800gotjunk.com)

**1-800-GOT-JUNK?**  
THE WORLD'S LARGEST HOME REMEDIAL SERVICE



NRC is a global service provider of environmental, industrial, and emergency response solutions with two facilities in Williston, VT:

- Oil Spill Response
- HAZMAT Response
- Industrial Cleaning Remediation
- Waste Management
- Marine Services
- Training and Consultancy

[www.nrcc.com](http://www.nrcc.com) | [iocdo@nrcc.com](mailto:iocdo@nrcc.com) | 802.488.3900

**800.966.1102**

**24-Hour Emergency Response**

EXCELLENCE IN  
ENVIRONMENTAL, INDUSTRIAL  
AND EMERGENCY SOLUTIONS

# GAUTHIER TRUCKING



## Residential & commercial rubbish removal and recycling services

- Container Service
- Roll-Off Containers
- Rear loaders 1-12 yards
- Open-top construction boxes
- Free tote with any residential account
- Compactors up to 50 yards
- Confidential documents
- Commercial shredding

**Vermont toll-free: 1-800-773-4025 • 879-4020**

**5 Gauthier Drive, Essex**

Locally owned and operated by the Gauthier family since 1950

[www.gauthiertruckingvt.com](http://www.gauthiertruckingvt.com)

